

SLOTLESS



Applimotion
Motors & Actuators

Agility™ Series Motors

Zero Cogging Direct Drive
Motors for Exceptionally
Smooth Motion

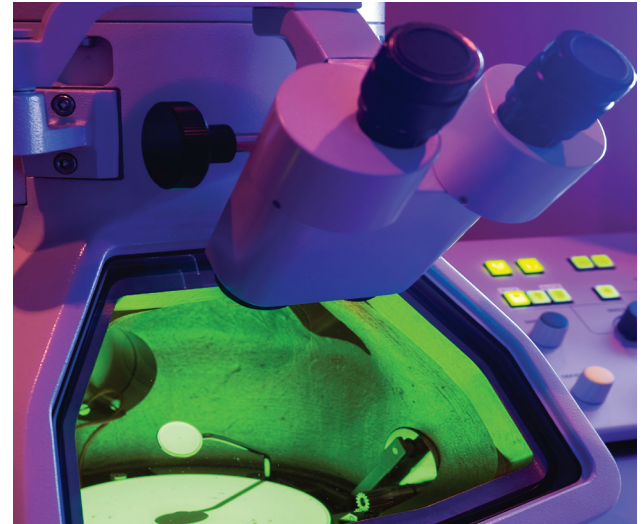
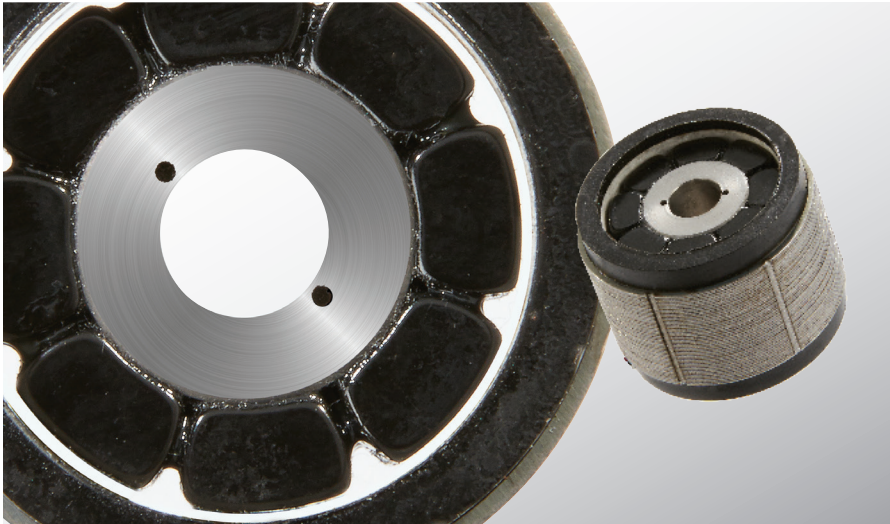
Designed with ZeroCog™ slotless motor technology from Applimotion, the Agility Series enables OEMs to achieve extremely smooth and highly accurate motion profiles using flexible and easy-to-integrate motor components.

› CELERAMOTION.COM



Agility™ Series Motors

Zero Cogging Direct Drive Motors for Exceptionally Smooth Motion



Smooth and Accurate.

Ideally suited for scanning, pointing, measuring and cutting applications that require extremely smooth velocity control and highly accurate positioning, the Agility Series delivers best-in-class torque ripple and zero cogging.

Engineered with ZeroCog™ slotless motor technology from Applimotion, the effects of cogging torque, magnetic forces, flux harmonics and phase balance and alignment are minimized to counteract the causes of torque ripple. Agility magnetic designs and construction techniques can achieve less than 2% torque ripple.

The Agility Series is offered in a wide range of low-profile form factors with a large through hole for convenient routing of cables, optics, sensing technologies and other system elements.

Frameless direct drive kit construction, high torque density and low mass enables Agility to be tightly integrated into compact, lightweight precision assemblies.

All models are compatible with a wide range of controllers and drives.

Windings and form factors can be customized to meet application requirements.

Benefits

- Zero cogging and low torque ripple for extremely smooth velocity control and low vibration
- Slotless magnetic design and direct drive technology enable highly accurate position control
- High torque density in low-profile form factors enables small footprint
- Large through hole for convenient routing of cables, optics, sensing technologies and other system elements
- High mechanical stiffness and low rotor inertia for efficient control of highly dynamic axes
- Easy integration into system design
- Compatible with wide range of drives and controllers
- Custom windings and form factors available to meet application requirements

Specifications	Units	UTS-19	UTS-53	UTS-89	UTS-114	UTS-222
Continuous Torque:	Nm	0.04	0.13	0.54	3.12	9.06
Peak Torque:	Nm	0.12	0.39	1.64	9.36	27.20
Diameter (Stator OD):	mm	18.97	52.83	88.90	114.30	222.25
Through Hole (Rotor ID):	mm	5.00	29.21	50.80	73.66	190.50
Stator Length:	mm	29.97	19.94	25.02	42.92	62.27
Pole Count:	#	6	12	12	16	64

Product groups listed and corresponding data are provided as a reference. Actual motor attributes are model and configuration specific. Standard and custom models are available within each group. Peak torque output is based on a 3:1 peak to continuous current ratio, and is based on limited duty cycle. Contact Celera Motion for torque-speed specifications. Specifications subject to change.

RoHS
CE



Applimotion
Motors & Actuators

3900 Atherton Road, Suite 110 | Rocklin, CA 95765 USA
Tel.: 781.266.5200 | innovation@celeramotion.com | celeramotion.com